

COMPANY\1999 JOBS\99-044 AHTD\WHITERIVER\JOB 110395\DRIBR80-81\A11 ACAD SCALE: 1/4"=1'-0"

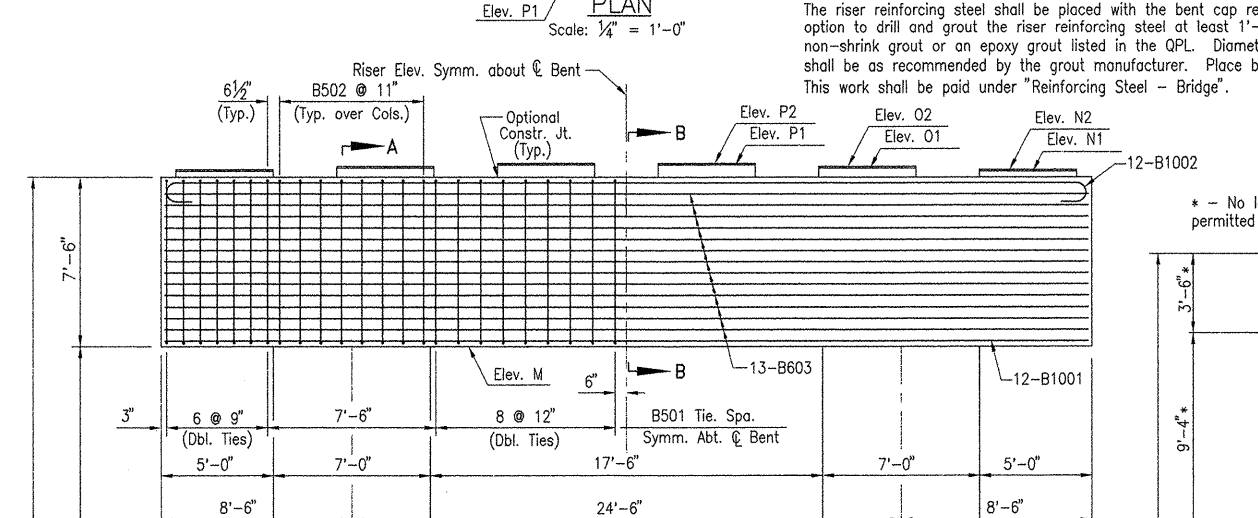
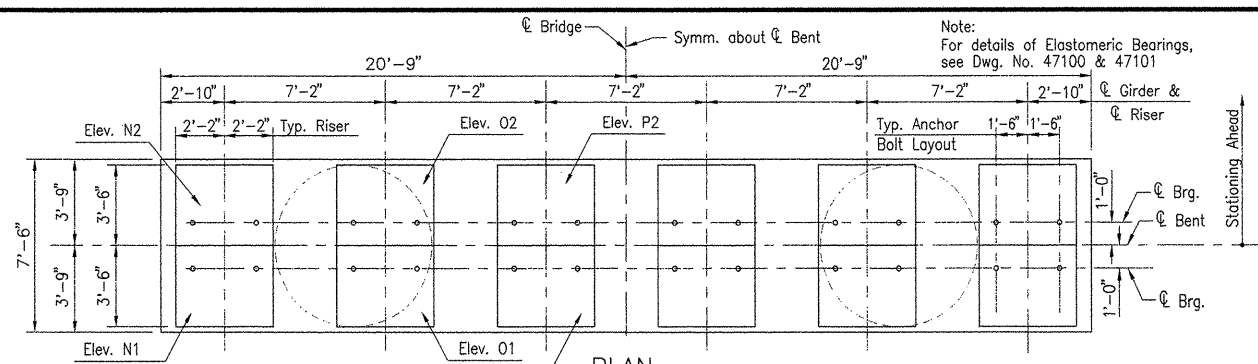
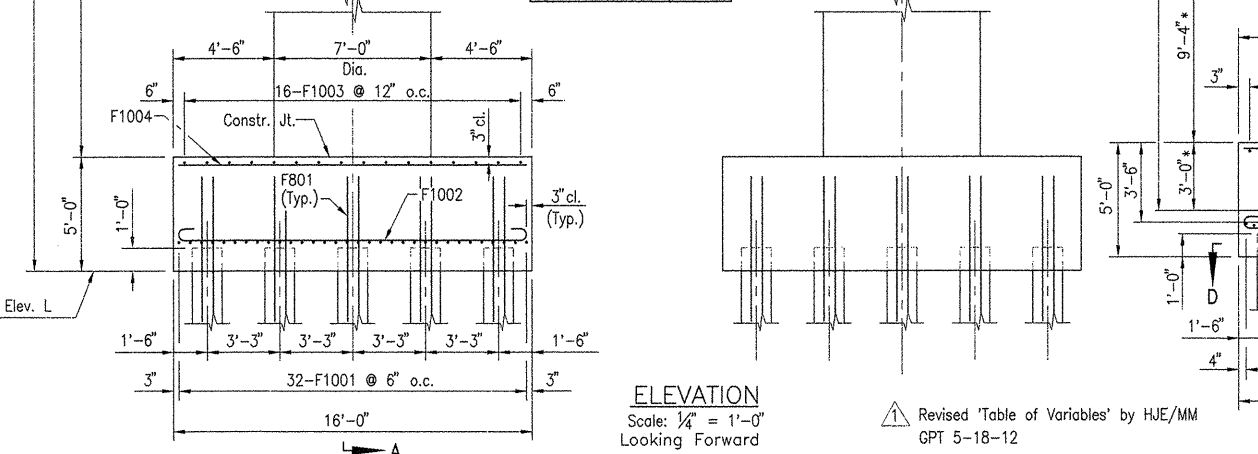


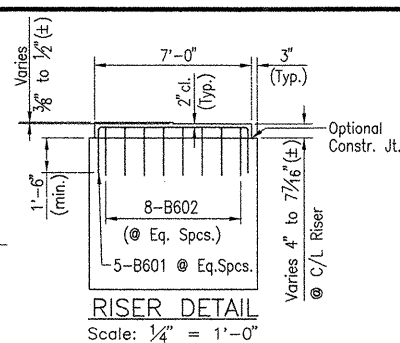
TABLE OF VARIABLES

Variable	Bent No.	
	79	80
A	66'-6"	68'-6"
B	54'-0"	56'-0"
C	63'-3"	65'-3"
D	61'-9"	63'-9"
E	35'-4"	37'-4"
F	208	215
G	4326'-6"	4469'-11"
Elev. L	153.80	154.15
Elev. M	212.81	215.16
220.64 Elev. N1	220.68	223.03
220.78 Elev. O1	220.82	223.17
220.92 Elev. P1	220.97	223.31
220.69 Elev. N2	220.64	222.99
220.83 Elev. O2	220.78	223.14
220.97 Elev. P2	220.93	223.28

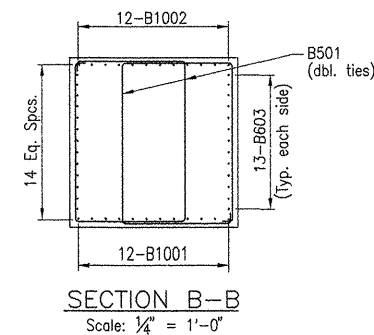


ELEVATION
Scale: 1/4" = 1'-0"
Looking Forward

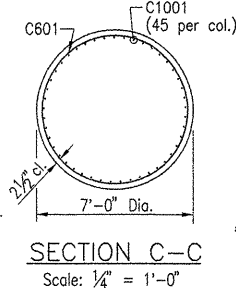
Revised 'Table of Variables' by HJE/MM
GPT 5-18-12



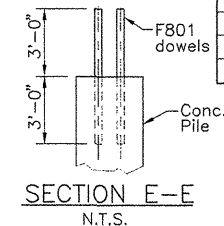
RISER DETAIL
Scale: 1/4" = 1'-0"



SECTION B-B
Scale: 1/4" = 1'-0"

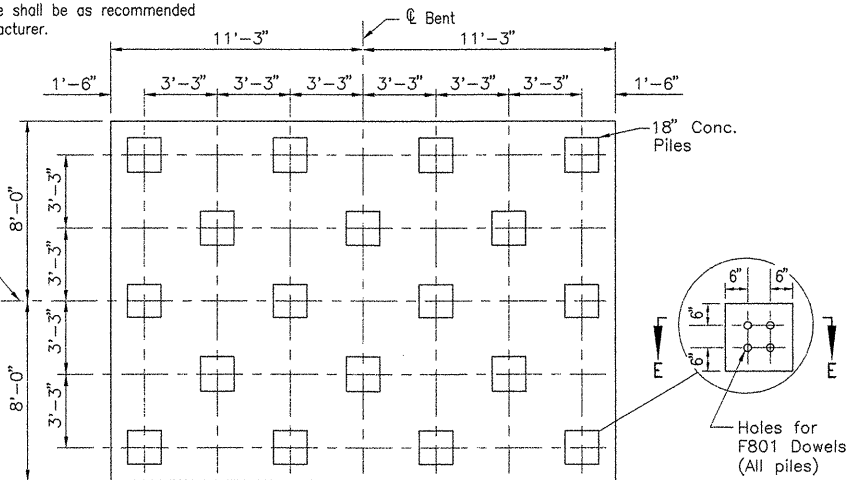


SECTION C-C
Scale: 1/4" = 1'-0"

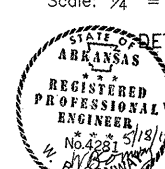
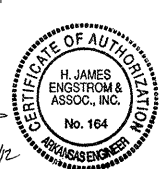


SECTION E-E
N.T.S.

Drill and grout F801 dowels 3'-0" into piles using an approved non-shrink grout or an epoxy grout listed on the QPL. Diameter of holes and installation procedure shall be as recommended by the grout manufacturer.



SECTION D-D
Scale: 1/4" = 1'-0"



DETAILS OF BENTS - WHITE RIVER
BENTS 79 - 80

WHITE RIVER STR. & APPRS.
(CLARENDON) (PH III) (F)
MONROE COUNTY

ROUTE 79 SEC. 13
ARKANSAS STATE HIGHWAY COMMISSION
LITTLE ROCK, ARK.

Engstrom & Modjeski and Masters, Inc.

DRAWN BY: CJA/JDB DATE: Sep. 10 FILENAME: b1103951_b19
CHECKED BY: FS DATE: Nov. 01 SCALE: 1/4"=1'-0"
DESIGNED BY: BMH DATE: Nov. 01
BRIDGE NO. 06830 DRAWING NO. 47050